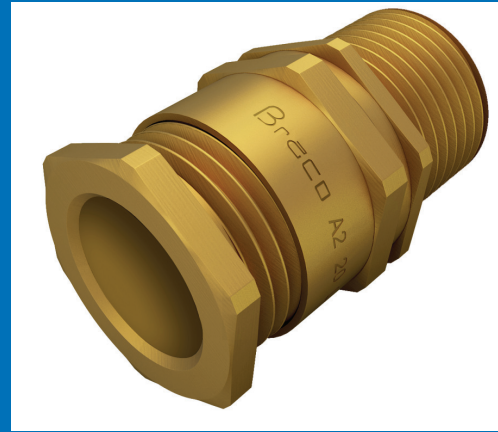


Braco A2 type brass cable glands are as per BS 6121 Part 1:1989 and suitable for unarmoured, plastic or rubber sheathed cables. These glands provide outer seal joint and are suitable for indoor as well as outdoor applications.



A2 Type Glands

GLAND SIZE	ENTRY THREAD				
	DIA. C	LENGTH MINIMUM E	DIA MAX. B	ACROSS FLAT	ACROSS CORNER
16L	16	12	3.50 - 9.00	21.00	24.00
20S	20	12	8.00 - 11.70	22.00	25.00
20L	20	12	11.00 - 14.00	24.00	26.60
25S	25	15	12.00 - 17.00	27.00	30.50
25L	25	15	13.00 - 20.70	30.00	33.30
32S	32	15	16.50 - 23.00	37.00	41.00
32L	32	15	19.00 - 26.30	41.00	45.50
40S	40	20	23.00 - 29.00	45.00	50.00
40L	40	20	25.00 - 33.00	46.00	51.00
50S	50	20	31.50 - 38.20	58.00	64.00
50L	50	20	36.50 - 44.00	62.00	69.00
63S	63	20	42.50 - 50.00	69.00	76.00
63L	63	20	48.00 - 56.00	73.00	81.00
75S	75	20	54.50 - 62.00	82.00	91.00
75L	75	20	60.50 - 68.00	88.00	97.00
90L	90	20	66.00 - 77.00	103.00	114.00

