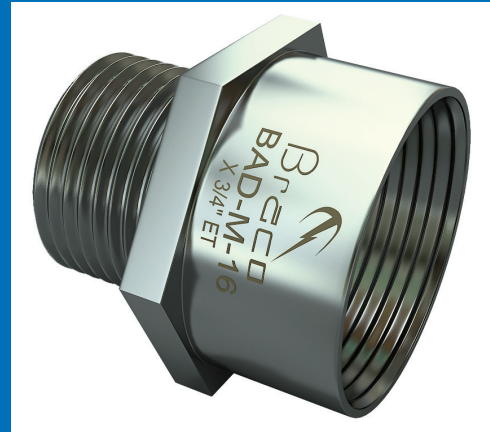


Braco Adaptors are used along with Glands for Extended or reduced entry holes in an apparatus. These are mainly manufactured out of brass but can be supplied in SS-304/316 and Aluminium also.

Brass Adaptors are nickel plated to avoid corrosion whilst storage and use. These are supplied with "O" Rings for IP protection. These Adaptors are Certified by Central Institute of Mining and Fuel Research, Dhanbad for use in Weather proof as well as Flame proof conditions

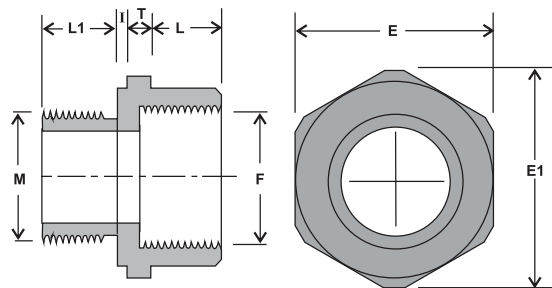
Adaptors are available with Different thread combination such as ET to ET, ET to MM, ET to NPT, MM to ET, MM to MM, MM to NPT, NPT to ET, NPT to MM and NPT to NPT

Suffix – BAD = for Brass Adaptors, SAD = for SS Adaptors and ALAD = for Aluminium Adaptors



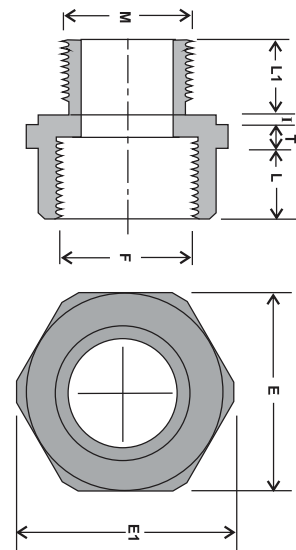
ADAPTOR

SIZE (M X F)	M	F	L1	T	L	E	E1
BAD 5/8" ET X 3/4" ET	5/8"ET	3/4"ET	12	3	12	22	25.5
BAD 5/8" ET X 1" ET	5/8"ET	1"ET	12	3	12	28	32.5
BAD 5/8" ET X 1-1/4" ET	5/8"ET	1-1/4"ET	12	4	12	35	40.5
BAD 3/4" ET X 1" ET	3/4"ET	1"ET	12	3	12	28	32.5
BAD 3/4" ET X 1-1/4" ET	3/4"ET	1-1/4"ET	12	4	12	35	40.5
BAD 3/4" ET X 1-1/2" ET	3/4"ET	1-1/2"ET	12	4	12	42	48
BAD 1" ET X 1-1/2" ET	1"ET	1-1/2"ET	12	4	12	42	48
BAD 1" ET X 1-1/4" ET	1"ET	1-1/4"ET	12	4	12	35	40.5
BAD 1" ET X 2" ET	1"ET	2"ET	12	4	15	55	64
BAD 1-1/4" ET X 1-1/2" ET	1-1/4"ET	1-1/2"ET	12	4	12	42	48
BAD 1-1/4" ET X 2" ET	1-1/4"ET	2"ET	12	4	15	55	64
BAD 1-1/4" ET X 2-1/2" ET	1-1/4"ET	2-1/2"ET	12	5	15	68	79
BAD 1-1/2" ET X 2" ET	1-1/2"ET	2"ET	12	4	15	55	64
BAD 1-1/2" ET X 2-1/2" ET	1-1/2"ET	2-1/2"ET	12	5	15	68	79
BAD 1-1/2" ET X 3" ET	1-1/2"ET	3"ET	12	5	15	81	94
BAD 2" ET X 2-1/2" ET	2"ET	2-1/2"ET	15	5	15	68	79
BAD 2" ET X 3" ET	2"ET	3"ET	15	5	15	81	94
BAD 2" ET X 3-1/2" ET	2"ET	3-1/2"ET	15	6	15	95	110
BAD 2-1/2" ET X 3" ET	2-1/2"ET	3"ET	15	5	15	81	94
BAD 2-1/2" ET X 3-1/2" ET	2-1/2"ET	3-1/2"ET	15	6	15	95	110
BAD 3" ET X 3-1/2" ET	3"ET	3-1/2"ET	15	6	15	95	110
BAD 5/8" ET X M20	5/8"ET	M20	12	3	12	23.5	27.5



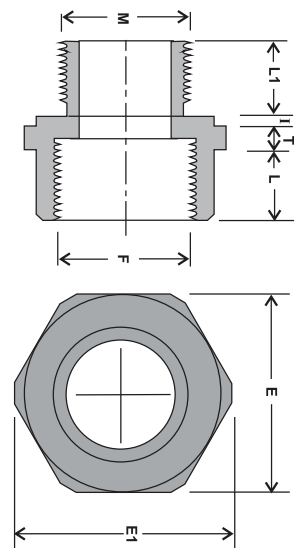
ADAPTOR

SIZE (M X F)	M	F	L1	T	L	E	E1
BAD 5/8" ET X M25	5/8"ET	M25	12	3	12	28.5	33
BAD 5/8" ET X M32	5/8"ET	M32	12	4	12	35.5	41
BAD 3/4" ET X M25	3/4"ET	M25	12	3	12	28.5	33
BAD 3/4" ET X M32	3/4"ET	M32	12	4	12	35.5	41
BAD 3/4" ET X M40	3/4"ET	M40	12	4	12	43.5	50.5
BAD 1" ET X M32	1"ET	M32	12	4	12	35.5	41
BAD 1" ET X M40	1"ET	M40	12	4	12	43.5	50.5
BAD 1" ET X M50	1"ET	M50	12	4	15	54.5	63
BAD 1-1/4" ET X M40	1-1/4"ET	M40	12	4	12	43.5	50.5
BAD 1-1/4" ET X M50	1-1/4"ET	M50	12	4	15	54.5	63
BAD 1-1/4" ET X M63	1-1/4"ET	M63	12	5	15	67.5	78.5
BAD 1-1/2" ET X M50	1-1/2"ET	M50	12	4	15	54.5	63
BAD 1-1/2" ET X M63	1-1/2"ET	M63	12	5	15	67.5	78.5
BAD 1-1/2" ET X M75	1-1/2"ET	M75	12	5	15	79.5	92
BAD 2" ET X M63	2"ET	M63	15	5	15	67.5	78.5
BAD 2" ET X M75	2"ET	M75	15	5	15	79.5	92
BAD 2" ET X M90	2"ET	M90	15	6	15	94.5	110
BAD 2-1/2" ET X M75	2-1/2"ET	M75	15	5	15	79.5	92
BAD 2-1/2" ET X M90	2-1/2"ET	M90	15	6	15	94.5	110
BAD 3" ET X M90	3"ET	M90	15	6	15	94.5	110
BAD M16 X 3/4" ET	M16	3/4"ET	12	3	12	22	25.5
BAD M16 X 1" ET	M16	1"ET	12	3	12	28	32.5
BAD M16 X 1-1/4" ET	M16	1-1/4"ET	12	4	12	35	40.5
BAD M20 X 1" ET	M20	1"ET	12	3	12	28	32.5
BAD M20 X 1-1/4" ET	M20	1-1/4"ET	12	4	12	35	40.5
BAD M20 X 1-1/2" ET	M20	1-1/2"ET	12	4	12	42	48
BAD M25 X 1-1/2" ET	M25	1-1/2"ET	12	4	12	42	48
BAD M25 X 1-1/4" ET	M25	1-1/4"ET	12	4	12	35	40.5
BAD M25 X 2" ET	M25	2"ET	12	4	15	55	64
BAD M32 X 1-1/2" ET	M32	1-1/2"ET	12	4	12	42	48
BAD M32 X 2" ET	M32	2"ET	12	4	15	55	64
BAD M32 X 2-1/2" ET	M32	2-1/2"ET	12	4	15	68	79
BAD M40 X 2" ET	M40	2"ET	12	4	15	55	64
BAD M40 X 2-1/2" ET	M40	2-1/2"ET	12	4	15	68	79
BAD M40 X 3" ET	M40	3"ET	12	5	15	81	94
BAD M50 X 2-1/2" ET	M50	2-1/2"ET	15	4	15	68	79
BAD M50 X 3" ET	M50	3"ET	15	5	15	81	94
BAD M50 X 3-1/2" ET	M50	3-1/2"ET	15	6	15	95	110
BAD M63 X 3" ET	M63	3"ET	15	5	15	81	94
BAD M63 X 3-1/2" ET	M63	3-1/2"ET	15	6	15	95	110
BAD M75 X 3-1/2" ET	M75	3-1/2"ET	15	6	15	95	110
BAD M16 X M20	M16	M20	12	3	12	23.5	27.5
BAD M16 X M25	M16	M25	12	3	12	28.5	33
BAD M16 X M32	M16	M32	12	4	12	35.5	41
BAD M20 X M25	M20	M25	12	3	12	28.5	33
BAD M20 X M32	M20	M32	12	4	12	35.5	41
BAD M20 X M40	M20	M40	12	4	12	43.5	50.5
BAD M25 X M32	M25	M32	12	4	12	35.5	41
BAD M25 X M40	M25	M40	12	4	12	43.5	50.5
BAD M25 X M50	M25	M50	12	4	15	54.5	63
BAD M32 X M40	M32	M40	12	4	12	43.5	50.5
BAD M32 X M50	M32	M50	12	4	15	54.5	63
BAD M32 X M63	M32	M63	12	4	15	67.5	78.5
BAD M40 X M50	M40	M50	12	4	15	54.5	63
BAD M40 X M63	M40	M63	12	4	15	67.5	78.5



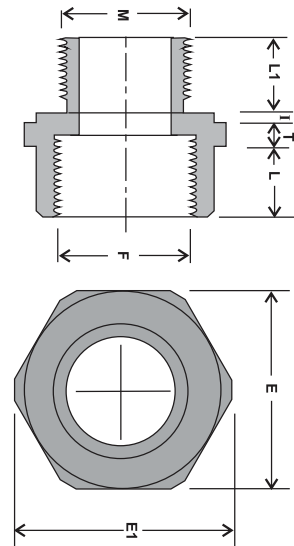
ADAPTOR

SIZE (M X F)	M	F	L1	T	L	E	E1
BAD M40 X M75	M40	M75	12	5	15	79.5	92
BAD M50 X M63	M50	M63	15	4	15	67.5	78.5
BAD M50 X M75	M50	M75	15	5	15	79.5	92
BAD M50 X M90	M50	M90	15	6	15	94.5	110
BAD M63 X M75	M63	M75	15	5	15	79.5	92
BAD M63 X M90	M63	M90	15	6	15	94.5	110
BAD M75 X M90	M75	M90	15	6	15	94.5	110
BAD 5/8" ET X 1/2" NPT	5/8"ET	1/2"NPT	12	3	12	22	25.5
BAD 5/8" ET X 3/4" NPT	5/8"ET	3/4"NPT	12	3	12	28	32.5
BAD 5/8" ET X 1" NPT	5/8"ET	1"NPT	12	4	14	35	40.5
BAD 3/4"ET X 1/2" NPT	3/4"ET	1/2"NPT	12	3	12	22	25.5
BAD 3/4" ET X 3/4" NPT	3/4"ET	3/4"NPT	12	3	12	28	32.5
BAD 3/4" ET X 1" NPT	3/4"ET	1"NPT	12	4	14	35	40.5
BAD 3/4" ET X 1-1/4" NPT	3/4"ET	1-1/4"NPT	12	4	15	42	48
BAD 1" ET X 3/4" NPT	1"ET	3/4"NPT	12	3	12	28	32.5
BAD 1" ET X 1" NPT	1"ET	1"NPT	12	4	14	35	40.5
BAD 1"ET X 1-1/4" NPT	1"ET	1-1/4"NPT	12	4	15	42	48
BAD 1"ET X 1-1/2" ET	1"ET	1-1/2"ET	12	4	12	42	48
BAD 1-1/4" ET X 1" NPT	1-1/4"ET	1"NPT	12	4	14	35	40.5
BAD 1-1/4"ET X 1-1/4" NPT	1-1/4"ET	1-1/4"NPT	12	4	15	42	48
BAD 1-1/4"ET X 1-1/2"NPT	1-1/4"ET	1-1/2"NPT	12	4	15	55	64
BAD 1-1/4"ET X 2" NPT	1-1/4"ET	2"NPT	12	5	16	68	79
BAD 1-1/2"ET X 1-1/4"NPT	1-1/2"ET	1-1/4"NPT	12	4	15	42	48
BAD 1-1/2"ET X 1-1/2"NPT	1-1/2"ET	1-1/2"NPT	12	4	15	55	64
BAD 1-1/2"ET X 2" NPT	1-1/2"ET	2"NPT	12	5	16	68	79
BAD 1-1/2"ET X 2-1/2" NPT	1-1/2"ET	2-1/2"NPT	12	5	22	81	94
BAD 2" ET X 1-1/2" NPT	2"ET	1-1/2"NPT	15	4	15	55	64
BAD 2" ET X 2" NPT	2"ET	2"NPT	15	5	16	68	79
BAD 2"ET X 2-1/2" NPT	2"ET	2-1/2"NPT	15	5	22	81	94
BAD 2"ET X 3" NPT	2"ET	3"NPT	15	6	22	95	110
BAD 2-1/2"ET X 2" NPT	2-1/2"ET	2"NPT	15	5	16	68	79
BAD 2-1/2"ET X 2-1/2" NPT	2-1/2"ET	2-1/2"NPT	15	5	22	81	94
BAD 2-1/2"ET X 3" NPT	2-1/2"ET	3"NPT	15	6	22	95	110
BAD 3" ET X 2-1/2"NPT	3"ET	2-1/2"NPT	15	5	22	81	94
BAD 3" ET X 3" NPT	3"ET	3"NPT	15	6	22	95	110
BAD M16 X 1/2" NPT	M16	1/2"NPT	12	3	12	22	25.5
BAD M16 X 3/4" NPT	M16	3/4"NPT	12	3	12	28	32.5
BAD M16 X 1" NPT	M16	1"NPT	12	4	14	35	40.5
BAD M20 X 1/2" NPT	M20	1/2"NPT	12	3	12	22	25.5
BAD M20 X 3/4" NPT	M20	3/4"NPT	12	3	12	28	32.5
BAD M20 X 1" NPT	M20	1"NPT	12	4	14	35	40.5
BAD M20 X 1-1/4" NPT	M20	1-1/4"NPT	12	4	15	42	48
BAD M25 X 3/4" NPT	M25	3/4"NPT	12	3	12	28	32.5
BAD M25 X 1" NPT	M25	1"NPT	12	4	14	35	40.5
BAD M25 X 1-1/4" NPT	M25	1-1/4"NPT	12	4	15	42	48
BAD M25 X 1-1/2" ET	M25	1-1/2"ET	12	4	12	42	48
BAD M32 X 1" NPT	M32	1"NPT	12	4	14	35	40.5
BAD M32 X 1-1/4" NPT	M32	1-1/4"NPT	12	4	15	42	48
BAD M32 X 1-1/2"NPT	M32	1-1/2"NPT	12	4	15	55	64
BAD M32 X 2" NPT	M32	2"NPT	12	5	16	68	79
BAD M40 X 1-1/4"NPT	M40	1-1/4"NPT	12	4	15	42	48
BAD M40 X 1-1/2"NPT	M40	1-1/2"NPT	12	4	15	55	64
BAD M40 X 2" NPT	M40	2"NPT	12	5	16	68	79



ADAPTOR

SIZE (M X F)	M	F	L1	T	L	E	E1
BAD M40 X 2" NPT	M40	2"NPT	12	5	16	68	79
BAD M40 X 2-1/2" NPT	M40	2-1/2"NPT	12	5	22	81	94
BAD M50 X 1-1/2" NPT	M50	1-1/2"NPT	15	4	15	55	64
BAD M50 X 2" NPT	M50	2"NPT	15	5	16	68	79
BAD M50 X 2-1/2" NPT	M50	2-1/2"NPT	15	5	22	81	94
BAD M50 X 3" NPT	M50	3"NPT	15	6	22	95	110
BAD M63 X 2" NPT	M63	2"NPT	15	5	16	68	79
BAD M63 X 2-1/2" NPT	M63	2-1/2"NPT	15	5	22	81	94
BAD M63 X 3" NPT	M63	3"NPT	15	6	22	95	110
BAD M75 X 2-1/2" NPT	M75	2-1/2"NPT	15	5	22	81	94
BAD M75 X 3" NPT	M75	3"NPT	15	6	22	95	110
BAD 1/2" NPT X 3/4" ET	1/2"NPT	3/4"ET	12	3	12	22	25.5
BAD 1/2" NPT X 1" ET	1/2"NPT	1"ET	12	4	12	28	32.5
BAD 1/2" NPT X 1-1/4" ET	1/2"NPT	1-1/4"ET	12	4	12	35	40.5
BAD 1/2" NPT X 1-1/2" ET	1/2"NPT	1-1/2"ET	12	4	12	42	48
BAD 3/4" NPT X 1" ET	3/4"NPT	1"ET	12	4	12	28	32.5
BAD 3/4" NPT X 1-1/4" ET	3/4"NPT	1-1/4"ET	12	4	12	35	40.5
BAD 3/4" NPT X 1-1/2" ET	3/4"NPT	1-1/2"ET	12	4	12	42	48
BAD 3/4" NPT X 2" ET	3/4"NPT	2"ET	12	5	15	55	64
BAD 1" NPT X 1-1/2" ET	1"NPT	1-1/2"ET	14	4	12	42	48
BAD 1" NPT X 2" ET	1"NPT	2"ET	14	5	15	55	64
BAD 1" NPT X 2-1/2" ET	1"NPT	2-1/2"ET	14	5	15	68	79
BAD 1-1/4" NPT X 2" ET	1-1/4"NPT	2"ET	15	5	15	55	64
BAD 1-1/4" NPT X 2-1/2" ET	1-1/4"NPT	2-1/2"ET	15	5	15	68	79
BAD 1-1/4" NPT X 3" ET	1-1/4"NPT	3"ET	15	6	15	81	94
BAD 1-1/2" NPT X 2" ET	1-1/2"NPT	2"ET	15	6	15	55	64
BAD 1-1/2" NPT X 2-1/2" ET	1-1/2"NPT	2-1/2"ET	15	5	15	68	79
BAD 1-1/2" NPT X 3" ET	1-1/2"NPT	3"ET	15	6	15	81	94
BAD 1-1/2" NPT X 3-1/2" ET	1-1/2"NPT	3-1/2"ET	15	6	15	95	110
BAD 2" NPT X 2-1/2" ET	2"NPT	2-1/2"ET	16	6	15	68	79
BAD 2" NPT X 3" ET	2"NPT	3"ET	16	6	15	81	94
BAD 2" NPT X 3-1/2" ET	2"NPT	3-1/2"ET	16	6	15	95	110
BAD 2-1/2" NPT X 3" ET	2-1/2"NPT	3"ET	22	6	15	81	94
BAD 2-1/2" NPT X 3-1/2" ET	2-1/2"NPT	3-1/2"ET	22	6	15	95	110
BAD 1/2" NPT X M20	1/2"NPT	M20	12	3	12	23.5	27.5
BAD 1/2" NPT X M25	1/2"NPT	M25	12	3	12	28.5	33
BAD 1/2" NPT X M32	1/2"NPT	M32	12	4	12	35.5	41
BAD 1/2" NPT X M40	1/2"NPT	M40	12	4	12	43.5	50.5
BAD 3/4" NPT X M25	3/4"NPT	M25	12	3	12	28.5	33
BAD 3/4" NPT X M32	3/4"NPT	M32	12	4	12	35.5	41
BAD 3/4" NPT X M40	3/4"NPT	M40	12	4	12	43.5	50.5
BAD 3/4" NPT X M50	3/4"NPT	M50	12	4	15	54.5	63
BAD 1" NPT X M40	1"NPT	M40	14	4	12	43.5	50.5
BAD 1" NPT X M50	1"NPT	M50	14	4	15	54.5	63
BAD 1" NPT X M63	1"NPT	M63	14	5	15	67.5	78.5
BAD 1-1/4" NPT X M50	1-1/4"NPT	M50	15	4	15	54.5	63
BAD 1-1/4" NPT X M63	1-1/4"NPT	M63	15	5	15	67.5	78.5
BAD 1-1/4" NPT X M75	1-1/4"NPT	M75	15	5	15	79.5	92
BAD 1-1/2" NPT X M50	1-1/2"NPT	M50	15	5	15	54.5	63
BAD 1-1/2" NPT X M63	1-1/2"NPT	M63	15	5	15	67.5	78.5
BAD 1-1/2" NPT X M75	1-1/2"NPT	M75	15	5	15	79.5	92
BAD 1-1/2" NPT X M90	1-1/2"NPT	M90	15	6	15	94.5	110
BAD 2" NPT X M63	2"NPT	M63	16	5	15	67.5	78.5
BAD 2" NPT X M75	2"NPT	M75	16	5	15	79.5	92
BAD 2" NPT X M90	2"NPT	M90	16	6	15	94.5	110



ADAPTOR

SIZE (M X F)	M	F	L1	T	L	E	E1
BAD 2-1/2" NPT X M75	2-1/2"NPT	M75	22	6	15	79.5	92
BAD 2-1/2" NPT X M90	2-1/2"NPT	M90	22	6	15	94.5	110
BAD 1/2" NPT X 3/4" NPT	1/2"NPT	3/4"NPT	12	3	12	28	32.5
BAD 1/2" NPT X 1" NPT	1/2"NPT	1"NPT	12	4	14	35	40.5
BAD 1/2" NPT X 1-1/4" NPT	1/2"NPT	1-1/4"NPT	12	4	15	42	48
BAD 3/4" NPT X 1" NPT	3/4"NPT	1"NPT	12	4	14	35	40.5
BAD 3/4" NPT X 1-1/4" NPT	3/4"NPT	1-1/4"NPT	12	4	15	42	48
BAD 3/4" NPT X 1-1/2" NPT	3/4"NPT	1-1/2"NPT	12	4	15	55	64
BAD 1" NPT X 1-1/4" NPT	1"NPT	1-1/4"NPT	14	4	15	42	48
BAD 1" NPT X 1-1/2" NPT	1"NPT	1-1/2"NPT	14	4	15	55	64
BAD 1" NPT X 2" NPT	1"NPT	2"NPT	14	5	16	68	79
BAD 1-1/4" NPT X 1-1/2" NPT	1-1/4"NPT	1-1/2"NPT	15	4	15	55	64
BAD 1-1/4" NPT X 2" NPT	1-1/4"NPT	2"NPT	15	5	16	68	79
BAD 1-1/4" NPT X 2-1/2" NPT	1-1/4"NPT	2-1/2"NPT	15	5	22	81	94
BAD 1-1/2" NPT X 2" NPT	1-1/2"NPT	2"NPT	15	5	16	68	79
BAD 1-1/2" NPT X 2-1/2" NPT	1-1/2"NPT	2-1/2"NPT	15	5	22	81	94
BAD 1-1/2" NPT X 3" NPT	1-1/2"NPT	3"NPT	15	6	22	95	110
BAD 2" NPT X 2-1/2" NPT	2"NPT	2-1/2"NPT	16	5	22	81	94
BAD 2" NPT X 3" NPT	2"NPT	3"NPT	16	6	22	95	110

