

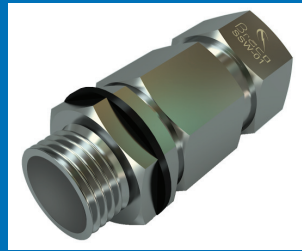
Braco Double Compression Glands are manufactured out of Stainless Steel of Grade SS 304 / 316 and are machined accurately to the required sizes.

These glands have two moisture proof seals and may be used under most climatic conditions. These are weather proof and water proof and when protected by a PVC shroud, these can be used under most corrosive conditions. The armour cone and ring gives excellent mechanical and electrical connections.

These Glands are certified by Central Institute of Mining and Fuel Research, Dhanbad for use in weather proof conditions. These Glands are rated with IP protection upto IP-65 Levels.

These glands are as per BS 6121:Part 1:2005 and have parts: SS body, Armour clamp and Ring, Gland Barrel sealing nut, two seals, check nut and flat washer between the gland barrel and check nut is provided to prevent the drag on outer seal.

These glands are available in various different sizes and are suitable for all cables up to 1000sq. mm and control cables up to 61 cores. Threads can be ET / mm /NPT as per requirement. However if any special kind of gland or thread is required, the same can be supplied on request.



DOUBLE COMPRESSION STAINLESS STEEL GLANDS

Weather proof

Material :SS-304 / SS-316

BRACO CAT. No.	B	A	A/F E	A/C E1	Nipple thread Inch			D	Acceptable cable OD (mm)	
					ET	MM	NPT		Above	Upto
SSW 3/8'	13	11	22	25	5/8"	M16	1/2" NPT	12	8	12
SSW 1/2"	14	11	22	25	5/8"	M16	1/2" NPT	12	8	13
SSW-001S	14	13	22	25	3/4"	M20	1/2" NPT	15	8	14
SSW-5/8"	17	14	23	26	3/4"	M20	1/2" NPT	15	11	15
SSW-001	17	14	24	27.5	3/4"	M20	1/2" NPT	15	12.5	16.5
SSW-01S	17.5	15	24	27.5	3/4"	M20	1/2" NPT	15	12.5	16.5
SSW 01	18.5	15	27	30	3/4"	M20	1/2" NPT	15	15	18
SSW 01L	18.5	15	27	30	1"	M25	3/4" NPT	15	15	18
SSW 02	20.5	16	30	35	1"	M25	3/4" NPT	15	18	20
SSW 02S	20.5	14	30	35	3/4"	M20	1/2" NPT	15	18	20
SSW 03	23	18	30	35	1"	M25	3/4" NPT	15	20	23
SSW 04	27	20	35	41	1"	M25	3/4" NPT	15	23	26
SSW 04L	27	24	35	41	1-1/4"	M32	1" NPT	15	23	26
SSW 05	31	24	40	46	1-1/4"	M32	1" NPT	15	26	30
SSW 05L	31	26	40	46	1-1/2"	M40	1-1/4" NPT	15	26	30
SSW 06	34	31	47	53	1-1/2"	M40	1-1/4" NPT	15	30	33
SSW 06S	34	24	47	53	1-1/4"	M32	1" NPT	15	30	33
SSW 07	38	32	52	58	1-1/2"	M40	1-1/4" NPT	15	33	37
SSW 08	42	38	56	64	2"	M50	1-1/2" NPT	15	37	41
SSW 09	47	39	59	67	2"	M50	1-1/2" NPT	15	41	46
SSW 010	53	44	67.5	77	2"	M50	1-1/2" NPT	20	46	52
SSW-010L	53	50	67.5	77	2-1/2"	M63	2" NPT	20	46	52
SSW 011	61	56	80	92	2-1/2"	M63	2" NPT	20	52	60
SSW 012	68	64	85	98	3"	M75	2-1/2" NPT	20	60	66
SSW 013S	73	64	99	113	3"	M75	2-1/2" NPT	20	66	72
SSW 013	79	74	99	113	3-1/4"	M82	3" NPT	20	72	78
SSW 014	84	78	105	118	3-1/2"	M90	3" NPT	20	78	83
SSW 015	95	88	115	129	4"	M100	3-1/2" NPT	20	83	93
SSW 016	106	100	125	140	4-1/2"	M115	4" NPT	20	93	104

- | Description | Material |
|------------------|----------------|
| 1. Outer Seal | Nitrile Rubber |
| 2. Sealing Nut | SS-304/316 |
| 3. Gland Body | SS-304/316 |
| 4. Clamping Ring | SS-304/316 |
| 5. Armour Clamp | SS-304/316 |
| 6. Inner Seal | Nitrile Rubber |
| 7. Gland Nipple | SS-304/316 |
| 8. Flat Washer | Nitrile Rubber |
| 9. Check Nut | SS-304/316 |

