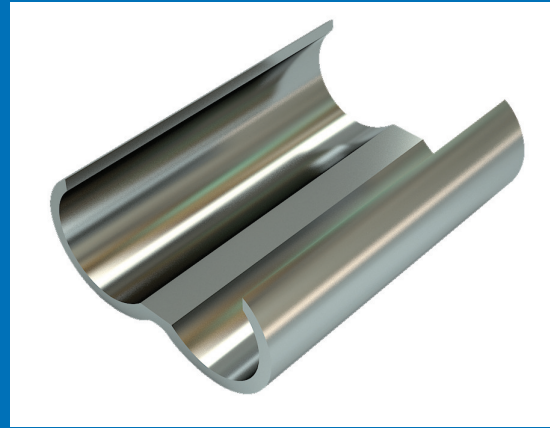


Braco Soldering Type Weak Back Ferrules are manufactured out of copper and are used to solder straight through joints. Tinning is provided to give better finish, to avoid oxidisation and to achieve maximum corrosion protection.



SOLDERING TYPE COPPER WEAK BACK FERRULES

Material Copper BS :1997

Finish : Electro Tinned

Size Sq. mm	Dimensions						Code No.
	A	C	G	B	T	P	
6	3.9	5.5	2	20	0.8	3	WB-79
10	4.5	6.2	2	25	0.8	4	WB-80
16	5.5	7.1	2	25	1.0	5	WB-81
25	6.9	8.8	2	30	1	7	WB-82
35	8.3	10.6	2	35	1.2	8	WB-83
50	9.6	12.4	2	40	1.2	9	WB-84
70	11.3	14.7	3	45	1.4	12	WB-85
95	13.5	17.4	3	50	1.4	13	WB-86
120	15.1	19.4	4	55	1.6	15	WB-87
150	16.6	21.2	4	60	1.8	16	WB-88
185	18.5	23.5	4	65	2.2	18	WB-89
225	20.5	24.9	5	75	2.2	20	WB-90
240	21.1	26.5	5	80	2.2	21	WB-91
300	23.6	30	5	85	2.8	23	WB-92
400	26.8	34.8	7	95	3.1	27	WB-93
500	30.1	39	7	105	3.5	30	WB-94
625	35	45	8	115	4	33	WB-95

