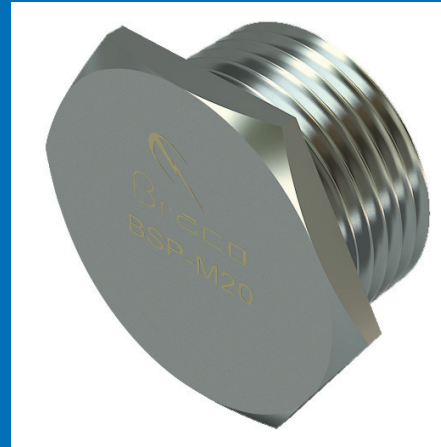


Braco Stopping Plugs are used to close unused entry holes in an apparatus. These Plugs are mainly manufactured out of brass but can be supplied in SS-304/316 and Aluminium also.

Brass Plugs are nickel plated to avoid corrosion whilst storage and use. These are supplied with "O" Rings for IP protection. These Plugs are Certified by Central Institute of Mining and Fuel Research, Dhanbad for use in Weather proof as well as Flame proof conditions

Suffix – BSP = for Brass Plugs, SSP = for SS Plugs and ALSP = for Aluminium Plugs

Threads can be ET / mm /NPT as per requirement



STOPPER PLUG

SIZE	A/C	A/F	T	L	C	A
ET THREAD						
BSP 3/4"ET	26	22	3	10	3/4"ET	15.5
BSP 1" ET	32	28	3	10	1"ET	21
BSP 1-1/4" ET	42	36	4	10	1-1/4"ET	27.8
BSP 1-1/2"ET	49	42	4	10	1-1/2"ET	33.5
BSP 2" ET	63	54	4	12	2"ET	45
BSP 2-1/4" ET	71	61	4	12	2-1/4"ET	52
BSP 2-1/2" ET	79	68	5	12	2-1/2"ET	57.5
BSP 2-3/4" ET	87	75	5	12	2-3/4"ET	64
BSP 3" ET	93	80	5	12	3"ET	69
BSP 3-1/4" ET	101	87	6	12	3-1/4"ET	76
BSP 3-1/2"ET	109	94	6	12	3-1/2"ET	82
M THREAD						
BSP M20	28	24	3	10	M20	16.5
BSP M25	34	29	3	10	M25	21
BSP M32	42	36	4	10	M32	28
BSP M40	51	44	4	10	M40	35.5
BSP M50	63	54	4	12	M50	45
BSP M63	79	68	5	12	M63	57.5
BSP M75	93	80	5	12	M75	69
BSP M90	110	95	6	12	M90	83
NPT THREAD						
BSP 1/2" NPT	28	24	3	12	1/2"NPT	16.3
BSP 3/4" NPT	34	30	3	12	3/4"NPT	21.6
BSP 1" NPT	42	36	4	14	1"NPT	28.1
BSP 1-1/4" NPT	52	45	4	15	1-1/4"NPT	35.9
BSP 1-1/2" NPT	59	51	4	15	1-1/2"NPT	41.9
BSP 2" NPT	73	63	5	16	2"NPT	53
BSP 2-1/2" NPT	87	75	5	22	2-1/2"NPT	65
BSP 3" NPT	105	91	6	22	3"NPT	80.9

