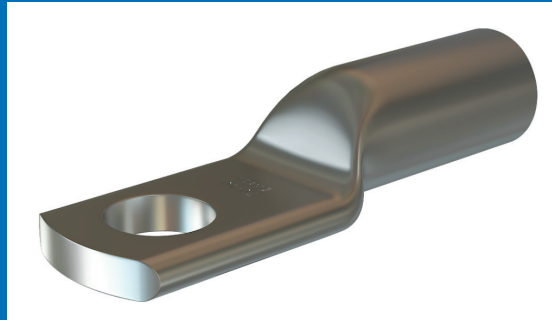


Braco Aluminium alloy tubular bi-metallic terminals are manufactured out of aluminium of purity equal to or greater than 99.5 % having maximum conductivity not less than 60% IACS. These are anti-corrosive and used for highly corrosive environment. The barrels are kept filled with grease so as to avoid oxidization of the Aluminium. These are designed to accept a variety of conductor forms especially low stranded compacted conductors.



These terminals are mainly used to terminate on copper bus bars. Whenever aluminium links terminated on to copper or copper based alloy terminals without suitable plating, results in the corrosion of the joint over a period leading to higher joint resistance.

Bi-metallic terminals are found most reliable and suitable for such connections.

## ALUMINIUM ALLOY TUBULAR BIMETALLIC TERMINALS

Material : Aluminium IS :5082 :1981

Size Sq. mm	Dimensions						Code No.
	E	A	C	D	B	J	
10	6.4	4.4	7.4	11	9	30	ATB-1
	8.2	4.4	7.4	13	9	30	ATB-2
16	6.4	5.4	8.3	11	13	37	ATB-3
	8.2	5.4	8.3	12	13	37	ATB-4
25	8.2	7	9.7	14	16	44	ATB-5
	10.2	7	9.7	17	16	44	ATB-6
35	8.2	8	10.8	15	18	47	ATB-7
	10.2	8	10.8	17	18	47	ATB-8
50	8.2	9.3	13	18	22	54	ATB-9
	10.2	9.3	13	18	22	54	ATB-10
70	10.2	11.1	15.4	22	26	60	ATB-11
	12.7	11.1	15.4	22	26	60	ATB-12
95	10.2	13.5	17.3	25	28	64	ATB-13
	12.7	13.5	17.3	25	28	64	ATB-14
120	10.2	14.8	19.6	28	32	73	ATB-15
	12.7	14.8	19.6	28	32	73	ATB-16
150	12.7	16.6	21.4	31	34	79	ATB-17
	16.2	16.6	21.4	31	34	79	ATB-18
185	12.7	18.5	24	34	36	84	ATB-19
	16.2	18.5	24	34	36	84	ATB-20
225	12.7	20.6	27	39	40	94	ATB-21
240	12.7	22	28	40	44	102	ATB-22
	16.2	22	28	40	44	102	ATB-23
300	16.2	24	31	45.7	47	115	ATB-24
	20.3	24	31	45.7	47	115	ATB-25
400	20.3	26.8	35.5	51	56	130	ATB-26
500	20.3	30.2	41	58	60	140	ATB-27
630	20.3	35	46	66	69	154	ATB-28
800	-	39	51	73	77	180	ATB-29
1000	-	43.5	57	81	100	220	ATB-30

