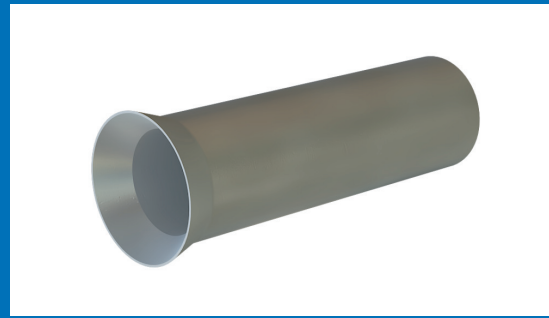


Braco End Sealing Ferrules are manufactured from electrolytic copper. These ferrules are used when a perfect connection is needed at the end of a cable. Some cables, especially those with small diameters, may conduct badly in electrical connections without an End Sealing Ferrule. By using these ferrules strands deviation can be avoided and the risk of cable breakage can be reduced. Also these ferrules create a long lasting contact pressure and a large contact surface. Tinning is provided to give better finish, to avoid oxidation and to achieve maximum corrosion protection.



COPPER CRIMPING END SEALING FERRULES

Material Copper BS: 1977

Finish: Electro Tinned

Size Sq. mm	Dimensions			Code No.
	A	C	J	
0.5	1.0-1.1	1.4-1.5	6	ES - 08
0.75	1.4-1.5	1.8-1.9	6	ES - 09
1.0	1.6-1.7	2.0-2.1	6	ES - 10
	1.6-1.7	2.0-2.1	10	ES - 11
1.5	1.8-1.9	2.2-2.3	7	ES - 12
	1.8-1.9	2.2-2.3	10	ES - 13
2.5	2.3-2.4	2.7-2.8	7	ES - 14
	2.3-2.4	2.7-2.8	12	ES - 15
4.0	2.8-2.9	3.2-3.3	9	ES - 16
	2.8-2.9	3.2-3.3	12	ES - 17
6.0	3.7-3.8	4.1-4.2	10	ES - 18
	3.7-3.8	4.1-4.2	12	ES - 19
	3.7-3.8	4.1-4.2	15	ES - 20
10	4.6-4.7	5.0-5.1	12	ES - 21
	4.6-4.7	5.0-5.1	15	ES - 22
	4.6-4.7	5.0-5.1	18	ES - 23
16	5.9-6.0	6.3-6.4	12	ES - 24
	5.9-6.0	6.3-6.4	15	ES - 25
	5.9-6.0	6.3-6.4	18	ES - 26

