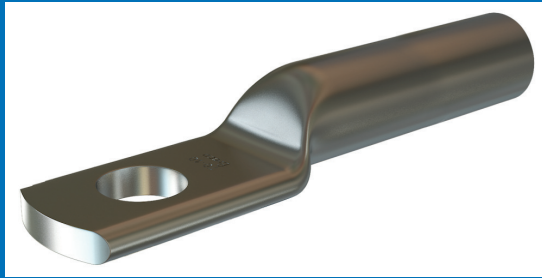


Braco copper tube terminals are manufactured from Electrolytic Copper Tube. The dimensions of the tube are designed to obtain the most efficient electrical conductivity and mechanical strength to resist vibration and pull out. These are used for terminating any size of cable, electrical switching equipments, where vibration is critical.



Terminals are annealed to guarantee optimum ductility which is an absolute necessity for connectors which will have to withstand the severe deformation arising when compressed and any bending of the palm during installation. In application subject to vibration terminals still have to perform a reliable connection, annealing plays a vital role in avoiding crackings or breaks between the barrel and palm.

The terminals are designed as per DIN standard 46235. The plating on the terminals avoids oxidization and achieves maximum corrosion protection.

### COPPER CRIMPING TERMINALS AS PER DIN STANDARDS

Cable mm <sup>2</sup>	Stud Hole E	Dimensions (mm <sup>2</sup> )							Cat No.
		A	C	B	D	G	H	J	
6	5.3	3.8	5.5	10	8.5	6.5	7.5	31	6-5 DIN
	6.5	3.8	5.5	10	8.5	7.5	8.0	32	6-6 DIN
10	6.5	4.5	6.0	10	8.5	7.5	8.0	35	10-6 DIN
	8.5	4.5	6.0	10	8.5	10.0	10.0	37	10-8 DIN
16	6.5	5.5	8.5	20	12	7.5	8.0	43	16-6 DIN
	8.4	5.5	8.5	20	12	10.0	10.0	45	16-8 DIN
	10.5	5.5	8.5	20	17	12.0	12.0	49	16-10 DIN
	13.0	5.5	8.5	20	19	13.0	13.0	50	16-12 DIN
25	6.5	7.0	10.0	20	15	7.5	8.0	47	25-6 DIN
	8.4	7.0	10.0	20	15	10.0	10.0	49	25-8 DIN
	10.5	7.0	10.0	20	17	12.0	12.0	51	25-10 DIN
	13.0	7.0	10.0	20	19	13.0	13.0	52	25-13 DIN
35	8.4	8.2	12.5	20	17	7.5	8.0	50	35-8 DIN
	10.5	8.2	12.5	20	19	10.0	10.0	52	35-10 DIN
	13.0	8.2	12.5	20	21	12.0	12.0	54	35-12 DIN
50	8.4	10.0	14.5	28	22	10.0	10.0	61	50-8 DIN
	10.5	10.0	14.5	28	22	12.0	12.0	63	50-10 DIN
	13.0	10.0	14.5	28	23	13.0	13.0	64	50-12 DIN
	17.0	10.0	14.5	28	28	14.5	14.5	66	50-16 DIN
70	10.5	11.5	16.5	28	24	10.0	10.0	64	70-10 DIN
	13.0	11.5	16.5	28	24	12.0	12.0	66	70-12 DIN
	17.0	11.5	16.5	28	32	13.0	13.0	67	70-16 DIN
	21.0	11.5	16.5	28	32	14.5	14.5	69	70-20 DIN
95	10.5	13.5	19.0	35	28	12.0	12.0	76	95-10 DIN
	13.0	13.5	19.0	35	28	12.0	12.0	76	95-12 DIN
	17.0	13.5	19.0	35	32	13.0	13.0	80	95-16 DIN
	21.0	13.5	19.0	35	34	14.5	14.5	82	95-20 DIN
120	10.5	15.5	21.0	35	32	18.0	16.0	83	120-10 DIN
	13.0	15.5	21.0	35	32	19.0	17.0	84	120-12 DIN
	17.0	15.5	21.0	35	32	15.0	19.0	87	120-16 DIN
	21.0	15.5	21.0	35	32	16.0	20.0	88	120-20 DIN
150	10.5	17.0	23.5	35	34	15.0	16.0	92	150-10 DIN
	13.0	17.0	23.5	35	34	16.0	17.0	93	150-12 DIN
	17.0	17.0	23.5	35	34	19.0	20.0	96	150-16 DIN
	21.0	17.0	23.5	35	40	16.0	20.0	96	150-20 DIN
185	10.5	19.0	25.5	40	37	15.0	16.0	96	185-10 DIN
	13.0	19.0	25.5	40	37	16.0	17.0	97	185-12 DIN
	17.0	19.0	25.5	40	37	19.0	20.0	100	185-16 DIN
	21.0	19.0	25.5	40	40	19.0	20.0	100	185-20 DIN
240	10.5	21.5	29.0	40	42	15.0	16.0	106	240-10 DIN
	13.0	21.5	29.0	40	42	16.0	17.0	107	240-12 DIN
	17.0	21.5	29.0	40	42	19.0	20.0	110	240-16 DIN
	21.0	21.5	29.0	40	46	21.0	20.0	112	240-20 DIN
300	13.0	24.0	32.0	50	48	19.0	22.0	119	300-12 DIN
	17.0	24.0	32.0	50	48	19.0	22.0	119	300-16 DIN
	21.0	24.0	32.0	50	48	21.0	22.0	121	300-20 DIN
400	17.0	27.5	38.5	70	55	25.0	25.0	140	400-16 DIN
	21.0	27.5	38.5	70	55	25.0	25.0	140	400-20 DIN
500	21.0	31.0	42.0	70	60	25.0	25.0	152	500-20 DIN
625	21.0	34.5	44.0	80	60	25.0	25.0	160	652-20 DIN

