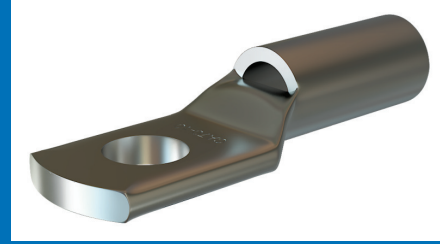


Braco Copper tube crimping terminals are manufactured from electrolytic copper tube. The dimensions of the tube are designed to obtain the most efficient electrical conductivity and mechanical strength to resist vibration and pull out. These are used for terminating any size of cables to terminating electrical switching equipments, where vibration is critical.



Terminals are annealed to guarantee optimum ductility which is an absolute necessity for connectors which will have to withstand the severe deformation arising when compressed and any bending of the palm during installation. In application subject to vibration, terminals still have to perform a reliable connection, annealing plays a vital role in avoiding cracking or breaks between the barrel and the palm.

The presence of inspection hole facilitates full insertion of conductor while the barrel length has been designed to allow easy and accurate position dies during the crimping operation.

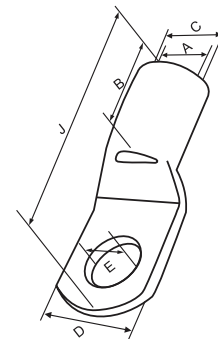
Tin plating on the terminals avoids oxidation and achieves maximum corrosion protection.

COPPER CRIMPING TERMINALS WITH INSPECTION HOLE (LIGHT DUTY)

Material Copper BS :1977

Finish : Electro Tinned

Size Sq. mm	Dimensions						Code No.
	E	A	C	D	B	J	
35	6.5	8.0	10.0	15.3	12	35	CA 35-6
	8.4	8.0	10.0	15.3	12	35	CA 35-8
	10.5	8.0	10.0	18	12	38	CA 35-10
	12.7	8.0	10.0	20	15	42	CA 35-12
50	6.5	9.2	11.2	16	16	43	CA 50-6
	8.4	9.2	11.2	16	16	43	CA 50-8
	10.5	9.2	11.2	16	16	43	CA 50-10
	12.7	9.2	11.2	17	16	43	CA 50-12
70	6.4	11.6	13.8	20	18	50	CA 70-6
	8.4	11.6	13.8	20	18	50	CA 70-8
	10.5	11.6	13.8	20	18	50	CA 70-10
	13	11.6	13.8	20	18	50	CA 70-12
95	8.4	12.8	15.6	23	20	55	CA 95-8
	10.5	12.8	15.6	23	20	55	CA 95-10
	13	12.8	15.6	23	20	55	CA 95-12
120	8.5	14.8	17.8	26	22	60	CA 120-8
	10.5	14.8	17.8	26	22	60	CA 120-10
	12.7	14.8	17.8	26	22	60	CA 120-12



COPPER CRIMPING TERMINALS WITH INSPECTION HOLE (LIGHT DUTY)

Size Sq. mm	Dimensions						Code No.
	E	A	C	D	B	J	
120	15	14.8	17.8	26	22	64	CA 120-14
	17	14.8	17.8	28	22	64	CA 120-16
	21	14.8	17.8	28	22	64	CA 120-20
150	8.4	16	19.6	28	26	69	CA 150-8
	10.5	16	19.6	28	26	69	CA 150-10
	12.7	16	19.6	28	26	69	CA 150-12
	17	16	19.6	28	26	69	CA 150-16
185	10.5	18	22	32	32	78	CA 185-10
	12.7	18	22	32	32	78	CA 185-12
	15	18	22	32	32	78	CA 185-14
	17	18	22	32	32	78	CA 185-16
	21	18	22	32	32	78	CA 185-20
240	10.5	22	26	38	38	92	CA 240-10
	12.7	22	26	38	38	92	CA 240-12
	17	22	26	38	38	92	CA 240-16
	21	22	26	38	38	92	CA 240-20
300	12.7	24	28.7	42	42	101	CA 300-12
	17	24	28.7	42	42	101	CA 300-16
	21	24	28.7	42	42	101	CA 300-20
400	17	28	33.2	49	44	114	CA 400-16
	21	28	33.2	49	44	114	CA 400-20
500	17	30	36	53	48	117	CA 500-16
	21	30	36	53	48	117	CA 500-20
	-	30	36	53	48	117	CA 500BL
630	13	35	41.5	61	69	145	CA 630-12
	17	35	41.5	61	69	145	CA 630-16
	21	35	41.5	61	69	145	CA 630-20
	-	35	41.5	61	69	145	CA 630BL
	8.5	35	41.5	61	69	145	CA 630-4X8
	10.5	35	41.5	61	69	145	CA 630-4X10
	13	35	41.5	61	69	145	CA 630-4X12
800	21	39	46.3	67	78	170	CA 800-20
	-	39	46.3	67	78	170	CA 800-BL
1000	-	43	53.8	76	90	200	CA-1000BL

