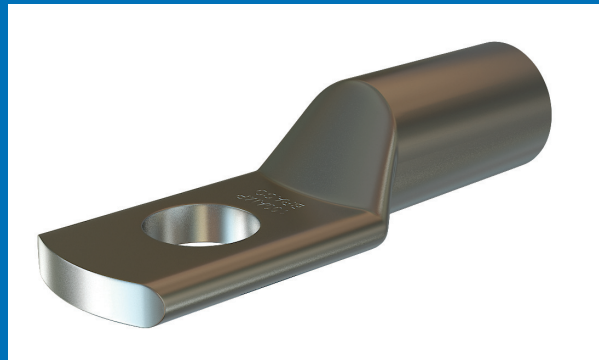


Braco soldering type copper terminals are made out of EC grade copper and used where high value of current flow is desired and due to soldering loose terminations are avoided, thereby preventing heating at termination ends. Terminals are tin plated to avoid oxidization and to achieve maximum corrosion protection.



## SOLDERING TYPE COPPER TERMINALS (LIGHT DUTY)

**Material Copper BS :1977**

**Finish : Electro Tinned**

AMPS	Dimensions						Code No.
	E	A	C	D	B	J	
15	3.2	3.9	4.8	7	7	19	CTS - 01
30	5.1	5.2	6.3	9	9	23	CTS - 02
60	6.4	8.1	9.5	14	14	36	CTS - 03
100	9.5	10.9	12.7	19	19	49	CTS - 04
150	9.5	13.9	15.9	24	23	57	CTS - 05
200	12.7	16.6	19.0	28	27	66	CTS - 06
300	12.7	19.0	22.2	33	28	80	CTS - 07
400	15.9	22.2	25.4	38	32	89	CTS - 08
500	19.0	25.4	28.6	43	38	105	CTS - 09
600	19.0	27.8	31.8	47	44	115	CTS - 10
800	23.8	31.7	38.1	56	47	121	CTS - 11
1000	23.8	38.1	44.5	66	56	152	CTS - 12
1000	-	50.0	57.3	85	62	164	CTS - 95

